

OptiPlex 3050 Micro

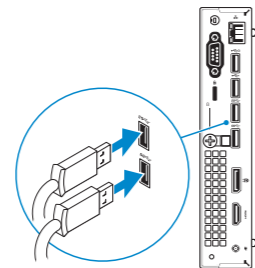
Quick Start Guide

Guia de Início Rápido



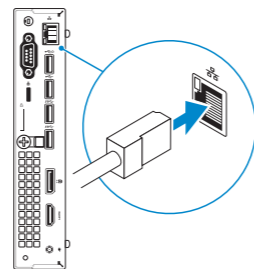
1 Connect the keyboard and mouse

Conecte o teclado e o mouse



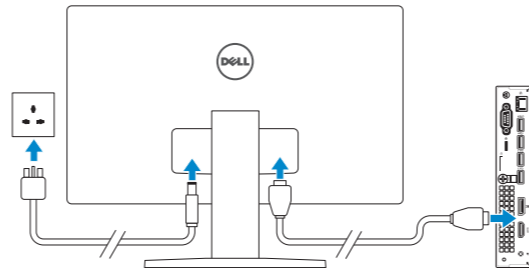
2 Connect the network cable — optional

Conecte o cabo da internet – opcional



3 Connect the display

Conecte a tela

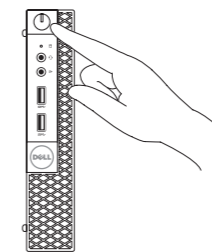
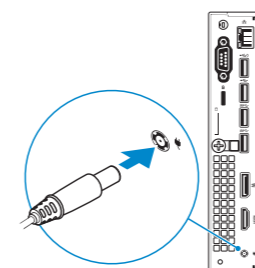


NOTE: If you ordered your computer with a discrete graphics card, connect the display to the discrete graphics card.

NOTA: se você encomendou seu computador com uma placa gráfica separada, conecte a tela ao conector na placa gráfica separada.

4 Connect the power adapter and press the power button

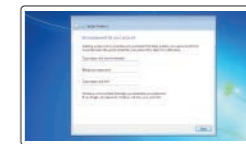
Conecte o adaptador de energia e pressione o botão liga/desliga



5 Finish operating system setup

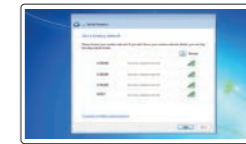
Conclua a configuração do sistema operacional

Windows 7



Set a password for Windows

Configurar uma senha para o Windows



Connect to your network

Conectar-se à rede

NOTE: If you are connecting to a secured wireless network, enter the password for the wireless network access when prompted.

NOTA: quando se conectar a uma rede sem fio segura, insira a senha para o acesso à rede sem fio quando solicitado.



Protect your computer

Proteja seu computador

Ubuntu

Follow the instructions on the screen to finish setup.

Siga as instruções na tela para concluir a configuração.

Product support and manuals

Suporte ao produto e manuais

Contact Dell

Entre em contato com a Dell

Regulatory and safety

Normatização e segurança

Regulatory model

Modelo normativo

Regulatory type

Tipo normativo

Computer model

Modelo do computador

Dell.com/support

Dell.com/support/manuals

Dell.com/support/windows

Dell.com/contactdell

Dell.com/regulatory_compliance

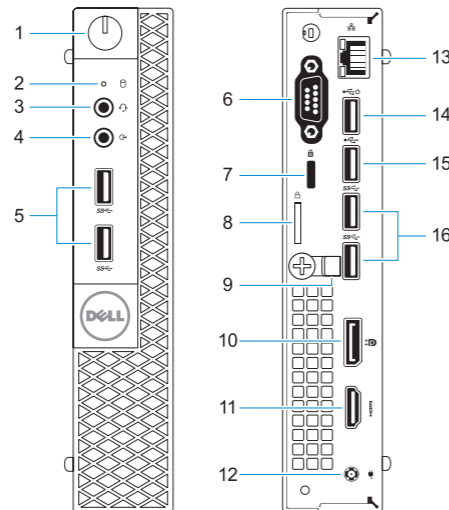
D10U

D10U002

OptiPlex 3050 Micro

Features

Recursos



1. Power button and power light
2. Hard drive activity light
3. Headset port
4. Line-out port
5. USB 3.0 ports
6. VGA port or Serial port or PS/2 port or DisplayPort — optional
7. Kensington security cable slot
8. Padlock ring
9. Cable holder
10. DisplayPort

11. HDMI port
12. Power connector port
13. Network port
14. USB 2.0 port (supports Smart Power On)
15. USB 2.0 port
16. USB 3.0 ports

1. Botão liga/desliga e luz de energia
2. Luz de atividade do disco rígido
3. Porta para fone de ouvido
4. Porta de saída de linha
5. portas USB 3.0
6. Porta VGA ou porta serial ou porta PS/2 ou DisplayPort — opcional
7. Encaixe do cabo de segurança Kensington
8. Anel de cadeado
9. Suporte do cabo
10. DisplayPort

11. Porta HDMI
12. Porta do conector de alimentação
13. Porta de rede
14. Porta USB 2.0 (suporta Smart Power On, ativação inteligente)
15. Porta USB 2.0
16. portas USB 3.0



07CHTMA00

© 2016 Dell Inc.

© 2016 Microsoft Corporation.

© 2016 Canonical Ltd.

Printed in China.

2016-11